



STB Newsletter

December 2018

Project Update:

Boardwalk Volunteers recently met with the chosen local contractor; Down to Earth Landscaping to confirm the Brief: New boardwalk extension is to be kept at the same height level as it is at the current end, so there will a seamless join.

Great news too - Bob (DTE) has found locally in Manorbier that the galvanised steel can be bent, so the new boardwalk path will meander and curve, following the existing track!

The access to the picnic area will be at the point where the path is nearest and it was agreed a nice wide 'run-off' would be suitable for all, wheelchairs, pushchairs etc. The new boardwalk will 'butt-up' to the tarmac path.

Total project time is estimated at 6 weeks, with 2-3 weeks actually on site. Estimated start is January 2019...we'll keep you posted.



The picture is of the path as it is now! The extraordinary recent rains truly wrecked it! So our little project is well timed ..but in the meantime its a bit wet, muddy and tricky to negotiate - as are all paths in Pembs this week!

The Slashpond Boardwalk is an alternative attraction to our wonderful Blue Flag beach. A sheltered 235 metre non-slip, paw friendly decked walkway around a serene pond in a habitat that supports a wildflower meadow, picnic area, willow dens, bug houses, bat & bird nesting boxes.

Parking at Trafalgar Terrace car park (along the seafront, turn left at the Galleon Inn, ¼ mile on the left. Parking is free with a donation box at the entrance to help local community groups). Access is from the car park and forks to the left & right. Sat Nav directions use SA62 3JU. Bring along a small net and enjoy the 'Dipping Deck' or test yourself with Nature Trail Quiz. The area offers a circular route of approximately ½ mile which is accessible to motobility scooters, wheelchairs and pushchairs.



Make A Difference this Christmas!



SUPPORT THE BOARDWALK would like to help with your Christmas shopping!

Christmas is coming ... presents to consider ... so you might be asking "How can I gift something that makes a difference?" Let's help you with that!. We've an idea that's:

Sustainable - it won't be redundant or broken by Boxing Day!

Spreads the cost - for you over a whole year - £2 a month, £5 a month, £10 a month.

Environmentally sound - supporting our continued efforts to enhance and preserve the lovely Broad Haven boardwalk and slashpond habitat.



How? - By creating a Direct Debit donation to Support The Boardwalk via www.localgiving.org/support-the-boardwalk



You can be confident your gift will tick all the boxes and you'll be assured of online security! Head to www.localgiving.org/support-the-boardwalk click on 'Give monthly' to setup a Direct Debit ...

... **Double your Donation:** There's even more benefit if you can time your donation 'just right.' By setting up a 12 month DD on **DECEMBER 11th 2018, after 10am**, your contribution will be match funded by Localgiving during months 7-12 by up to £10 a month!

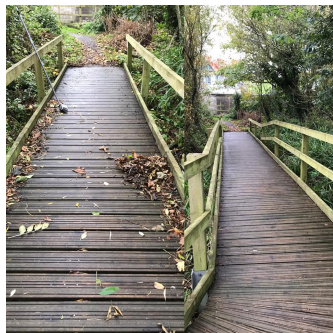
Please note: the match funding 'pot' is not opened-ended, they have £100,000 available for matching monthly donations. The campaign launches at 10am on December 11th and will run until the match funding runs out (or Thursday 10th January - whichever comes first). SO IT IS IMPORTANT THAT YOU FOLLOW THESE STEPS AS SOON AS IS POSSIBLE AFTER 10AM ON THE 11TH OF DECEMBER.

Then take a moment to pat yourself on the back as we can't be there to do that; we will be delighted to see your Direct Debit instruction and will be in touch to thank you.

Free 'Buy a Board' certificate to everyone who donates or sets up a Direct Debit in December. Tell your loved one that you have made a donation in their name and then tell us by emailing boardwalkgang@gmail.com. We'll send you or the recipient a FREE Certificate as acknowledgment of the contribution.

One-off donation If you'd prefer to make a one-off donation go to www.localgiving.org/support-the-boardwalk and select 'Donate now.'

Other Support The Boardwalk News:



Although it has been quite a quiet few weeks for boardwalk activities, we would like to say a massive 'thank you' to all who attended the 'Spruce Up' morning on Saturday 3rd November to tackle some jobs before the bad weather set in. Piles of soggy leaves were cleared to avoid boards deteriorating, overgrowth was cut back to

allow safe passage by those in wheelchairs, mobility scooters or with pushchairs and installation in the undergrowth; 2 new 'Hilton' hedgehog hotels. Surprising what can be done in just a short time!

Kate Markham had reported, following a litter pick, that if the behaviour of 3 specific culprits could be improved that would help keep our beauty spot tidy. The dropper of Jakemans lozenge wrappers at the start and end of the boardwalk, the drinker of energy drinks who seems too tired to carry their cans as far as the nearest bin and the glugger of San Miguel who also drops their tins over the side of the boardwalk! All 3 seem to be frequent offenders going by the number of wrappers and cans that were collected! Please, please would everyone help us to deter others from littering, allowing us to provide a wonderful place for all to enjoy



Join Us!

Through 2019: 8pm, first Monday of alternate months from Feb 2019 (Feb, Apr, Jun, Jul, Aug, Oct, Dec) in The Rafters (behind and above the Broad Haven village hall).

It's a lovely community group with something for everyone and it's a bit of a social too! Please keep an eye on our facebook page; you'd be most welcome. If you're not on facebook please email us (boardwalkgang@gmail.com) and we'll send you its time/date. Have a think about it! Thx so much.

'Support the Boardwalk' – Fundraising to Preserve and to Enhance

WATCH THIS SPACE (for activity and meeting re-scheduling when necessary):

Facebook - [facebook.com/supporttheboardwalk](https://www.facebook.com/supporttheboardwalk)

Website - <http://www.supporttheboardwalk.co.uk>